

Lighting Source

YUSING

● www.yusinglighting.com



LED Sunlight Bulb

Make your room full of sunshine.



Ra \geq 95

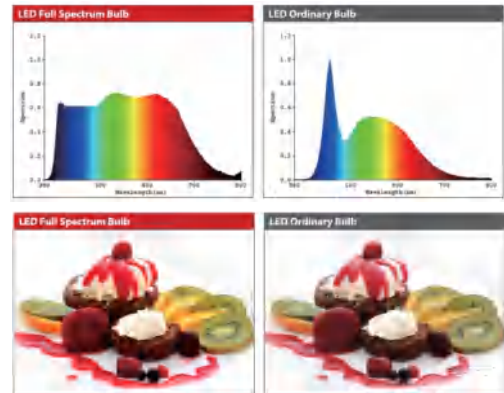
Plastic coated Alu.

Product Features

- Lighting is more comfortable with reference to the lighting designed by the sun light source.
- Full spectrum design, lighting is more real and natural.
- Stepless dimming, choose the best luminosity of everyone.
- Suitable for all kinds of medium and high-end lighting occasions such as museums, art exhibitions, etc.



-20°+40°



Item No.	Code	Voltage [V]	Wattage [W]	Lumen [lm]	Ra	PF	Life time [H]	Material	Base	Size [mm]	Packing [Pcs/m ³ /KG]
LB101FS-9W-E-G1	A60	100-240	9	800	\geq 95	$>$ 0.5	25000	PC+Alu.	E27	60*118	100/0.037/7.5
LB201FS-5W-E-G1	C37	100-240	5	380	\geq 95	$>$ 0.5	25000	PC+Alu.	E14	37*110	100/0.024/4.7
LB301FS-5W-E-G1	G45	100-240	5	380	\geq 95	$>$ 0.5	25000	PC+Alu.	E14	45*80	100/0.026/4.2
LB101FSDL-9W-E-G1	A60	110-130/220-240	9	800	\geq 95	$>$ 0.5	25000	PC+Alu.	E27	60*118	100/0.037/7.5
LB201FSDL-5W-E-G1	C37	220-240	5	380	\geq 95	$>$ 0.5	25000	PC+Alu.	E14	37*110	100/0.024/4.7
LB301FSDL-5W-E-G1	G45	220-240	5	380	\geq 95	$>$ 0.5	25000	PC+Alu.	E14	45*80	100/0.026/4.2



LED Eye-Protection Bulb

Human Centric Lighting healthy for you.

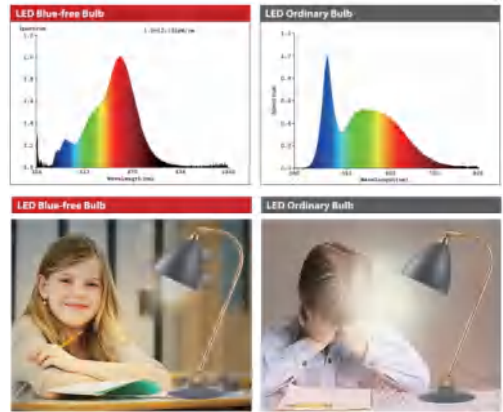


Ra≥95

Plastic coated Alu.

Product Features

- Human lighting can lighten the burden of the eyes and conform to the human rhythm.
- There is no blue light design.
Stepless dimming, choose the best luminosity of everyone.
- It is suitable for indoor lighting occasions such as bedrooms.



Item No.	Code	Voltage [V]	Wattage [W]	Lumen [lm]	Ra	PF	Life time [H]	Material	Base	Size [mm]	Packing [Pcs/m ³ /KG]
LB101H-9W-E-G1	A60	100-240	9	800	≥95	>0.5	25000	PC+Alu.	E27	60*118	100/0.037/7.5
LB201H-5W-E-G1	C37	100-240	5	380	≥95	>0.5	25000	PC+Alu.	E14	37*110	100/0.024/4.7
LB301H-5W-E-G1	G45	100-240	5	380	≥95	>0.5	25000	PC+Alu.	E14	45*80	100/0.026/4.2
LB101HDL-9W-E-G1	A60	110-130/220-240	9	800	≥95	>0.5	25000	PC+Alu.	E27	60*118	100/0.037/7.5
LB201HDL-5W-E-G1	C37	220-240	5	380	≥95	>0.5	25000	PC+Alu.	E14	37*110	100/0.024/4.7
LB301HDL-5W-E-G1	G45	220-240	5	380	≥95	>0.5	25000	PC+Alu.	E14	45*80	100/0.026/4.2

High color rendering index **Ra > 97**

The lighting makes the subject natural and fresh



Item No.	Code	Voltage [V]	Wattage [W]	Lumen [lm]	Ra	PF	Life time [H]	Material	Base	Size [mm]	Packing [Pcs/m ² /KG]
LB101HR+3.5W-E-G1	A60	185-265	3.5	250	≥97	>0.5	25000	PC+Alu.	E27	60*108	100/0.052/ 7.5
LB101HR+5W-E-G1	A60	185-265	5	470	≥97	>0.5	25000	PC+Alu.	E27	60*112	100/0.052/ 7.5
LB101HR+9.5W-E-G1	A60	185-265	9.5	810	≥97	>0.5	25000	PC+Alu.	E27	60*118	100/0.054/ 9.5
LB101HR+12W-E-G1	A60	185-265	12	1055	≥97	>0.5	25000	PC+Alu.	E27	60*118	100/0.054/ 9.5
LB201HR+3.5W-E-G1	C37	185-265	3.5	250	≥97	>0.5	25000	PC+Alu.	E14	37*100	100/0.022/4.5
LB201HR+5W-E-G1	C37	185-265	5	470	≥97	>0.5	25000	PC+Alu.	E14	37*100	100/0.022/4.5
LB301HR+3.5W-E-G1	G45	185-265	3.5	250	≥97	>0.5	25000	PC+Alu.	E14	45* 80	100/0.026/4.2
LB301HR+5W-E-G1	G45	185-265	5	470	≥97	>0.5	25000	PC+Alu.	E14	45* 80	100/0.026/4.2
LC403HR+6W-E-G1	R50	185-265	6	430	≥97	>0.5	25000	PC+Alu.	E14	50*85	100/0.03/5
LC403HR+9W-E-G1	R63	185-265	9	806	≥97	>0.5	25000	PC+Alu.	E27	63*102	50/0.03/6
LC403HR+12W-E-G1	R80	185-265	12	1055	≥97	>0.5	25000	PC+Alu.	E27	80*112	100/0.078/9

Ra ≥ 80

Plastic coated Alu.



Fields of Application

- Decorative--Living room, Kitchen, bedroom, etc.
- Operating temperature: -20 C ~ 40 C
- Not for emergency or exit lights



-20°+40°



220°



ECO

Item No.	Code	Voltage [V]	Wattage [W]	Lumen [lm]	Ra	DF	Life time [H]	Material	Base	Size [mm]	Packing [Pcs/m ³ /KG]
LB161-5W-E-G9	A55	185-265	5W	500	≥80	>0.5	25000	PC+Alu.	E27	55*102	100/0.052/7.5
LB101-6W-E-G9	A60	185-265	6W	640	≥80	>0.5	25000	PC+Alu.	E27	60*108	100/0.052/7.5
LB101-8W-E-G9	A60	185-265	8W	806	≥80	>0.5	25000	PC+Alu.	E27	60*108	100/0.052/7.5
LB101-9W-E-G9	A60	185-265	9W	1050	≥80	>0.5	25000	PC+Alu.	E27	60*108	100/0.052/7.5
LB101-11W-E-G9	A60	185-265	11W	1350	≥80	>0.7	25000	PC+Alu.	E27	60*112	100/0.052/7.5
LB101-12W-E1-G9	A60	185-265	12W	1500	≥80	>0.7	25000	PC+Alu.	E27	60*118	100/0.052/7.5
LB101-16W-E-G9	A60	185-265	16W	1800	≥80	>0.7	25000	PC+Alu.	E27	65*132	100/0.052/7.5
LB101-17W-E-G9	A65	185-265	17W	2100	≥80	>0.7	25000	PC+Alu.	E27	65*132	100/0.054/9.5



15 W



12 W



9 W



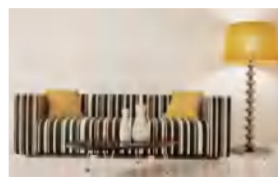
5.5 W



Ra≥80

R9>0

Plastic coated Alu.



Fields of Application

- Decorative—Living room, Kitchen, bedroom, etc.
- Operating temperature: -20 C ~ 40 C
- Not for emergency or exit lights



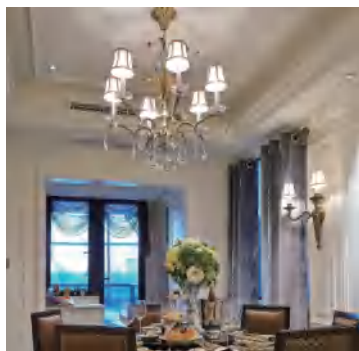
-20°+40°
220°
ECO

Item No.	Code	Voltage [V]	Wattage [W]	Lumen [lm]	Ra	PF	Life time [H]	Material	Base	Size [mm]	Packing [Pcs/m ³ /KG]
LB101DL-5.5W-U-G1	A19	120	5.5	450	≥80	>0.7	25000	PC+Alu.	E26	60*106	100/0.050/6.5
LB101DL-9W-U-G1	A19	120	9	810	≥80	>0.7	25000	PC+Alu.	E26	60*110	100/0.052/7.5
LB101DL-12W-U-G1	A19	120	12	1100	≥80	>0.7	25000	PC+Alu.	E26	60*116	100/0.054/9.5
LB101DL-15W-U-G1	A21	120	15	1600	≥80	>0.7	25000	PC+Alu.	E26	72*131	100/0.064/11.5



Ra≥80

Plastic coated Alu.



Fields of Application

- Decorative—Living room, Kitchen, bedroom, etc.
- Operating temperature: -20 C ~ 40 C
- Not for emergency or exit lights



-20°+40°



220°



ECO

Item No.	Code	Voltage [V]	Wattage [W]	Lumen [lm]	Ra	PF	Life time [H]	Material	Base	Size [mm]	Packing [Pcs/m ³ /KG]
LB101-4.9W-W-G8	A55	85-265	4.9	540	≥80	>0.4	15000	PC+Alu.	E27	55*102	100/0.052/7.5
LB101-6W-W-G8	A55	85-265	6	540	≥80	>0.7	15000	PC+Alu.	E27	55*102	100/0.052/7.5
LB101-8W-W-G8	A60	85-265	8	810	≥80	>0.7	15000	PC+Alu.	E27	60*108	100/0.052/7.5
LB101-9W-W-G8	A60	85-265	9	1055	≥80	>0.7	15000	PC+Alu.	E27	60*112	100/0.052/7.5
LB101-10W-W-G8	A65	85-265	10	1350	≥80	>0.7	15000	PC+Alu.	E27	65*120	100/0.064/11.5



Dimmable



LB111DL

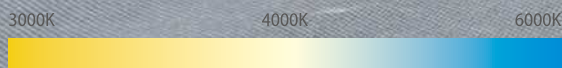
Compatible Triac Dimmer List

- ☑ PEHA 434
- ☑ Merten SBD600RL
- ☑ Busch 2250U
- ☑ Berker 2875
- ☑ Busch 6517 U-101
- ☑ JUNG 225 NV DE
- ☑ Busch 2200
- ☑ SIEMENS 5TC8 283
- ☑ GIRA 0307 00/102
- ☑ SIEMENS 5TC8 256



Dimmable

E14 E27



LB201DL



LB301DL



Item No.	Code	Voltage [V]	Wattage [W]	Lumen [lm]	Ra	PF	Life time [H]	Material	Base	Size [mm]	Packing [Pcs/m ³ /KG]
LB101DL-9W-E-G2	A60	185-265	9	806	≥80	>0.5	25000	PC+Alu.	E27	60*112	100/0.056/ 7.5
LB101DL-12W-E-G2	A60	185-265	12	1050	≥80	>0.5	25000	PC+Alu.	E27	60*118	100/0.074/10.6
LB201DL-5W-E-G2	C37	185-265	5	500	≥80	>0.5	25000	PC+Alu.	E14	37*102	100/0.022/ 4.5
LB301DL-5W-E-G2	G45	185-265	5	500	≥80	>0.5	25000	PC+Alu.	E14	45*80	100/0.026/ 4.2

LED Bulbs



Economic A60/A65

Ra \geq 80

Plastic coated Alu.

IC-DRIVER



ErP



3000K

4000K

6500K



-20°+40°



180°



ECO

Item No.	Code	Voltage [V]	Wattage [W]	Lumen [lm]	Ra	PF	Life time [H]	Material	Base	Size [mm]	Packing [Pcs/m ³ /KG]
LB161-5W-L3-GC3	A55	185-265	5	400	\geq 80	>0.5	15000	E27	PC+Alu.	55*102	100/0.052/7.5
LB101-7W-L3-GC3	A60	185-265	7	600	\geq 80	>0.5	15000	E27	PC+Alu.	60*108	100/0.052/7.5
LB101-9W-L3-GC3	A60	185-265	9	800	\geq 80	>0.5	15000	E27	PC+Alu.	60*108	100/0.052/7.5
LB101-11W-L3-GC3	A60	185-265	11	1000	\geq 80	>0.5	15000	E27	PC+Alu.	60*112	100/0.054/9.5
LB101-11W-L3-GC3H	A60	185-265	11	1200	\geq 80	>0.5	15000	E27	PC+Alu.	60*112	100/0.054/9.5
LB101-15W-L3-GC3	A60	185-265	15	1400	\geq 80	>0.5	15000	E27	PC+Alu.	60*118	100/0.054/9.5
LB101-18W-L3-GC3	A65	185-265	18	1650	\geq 80	>0.5	15000	E27	PC+Alu.	65*132	100/0.064/11.5

Ra≥80

Plastic coated Alu.

IC-DRIVER



LB201



LB301

Fields of Application

- Decorative—Living room, Kitchen, bedroom, etc.
- Operating temperature: -20 °C ~ 40 °C
- Not for emergency or exit lights

Item No.	Code	Voltage [V]	Wattage [W]	Lumen [lm]	Ra	PF	Life time [H]	Material	Base	Size [mm]	Packing [Pcs/m³/KG]
LB201-3W-L3-GC2	C37	185-265	3	240	≥80	>0.5	15000	PC+Alu.	E14/E27	37*102	100/0.022/4.5
LB201-5W-L3-GC2	C37	185-265	5	400	≥80	>0.5	15000	PC+Alu.	E14/E27	37*102	100/0.022/4.5
LB201-6W-L3-GC2	C37	185-265	6	470	≥80	>0.5	15000	PC+Alu.	E14/E27	37*102	100/0.022/4.5
LB201-6W-L3-GC2H	C37	185-265	7	560	≥80	>0.5	15000	PC+Alu.	E14/E27	37*102	100/0.022/4.5
LB201-7W-L3-GC1H	C37	185-265	7	670	≥80	>0.5	15000	PC+Alu.	E14/E27	37*102	100/0.022/4.5
LB201-8W-L3-G5L	C37	185-265	8	720	≥80	>0.5	15000	PC+Alu.	E14/E27	37*102	100/0.022/4.5
LB201-8W-L3-G5H	C37	185-265	8	850	≥80	>0.5	15000	PC+Alu.	E14/E27	37*102	100/0.022/4.5
LB301-3W-L3-GC2	G45	185-265	3	240	≥80	>0.5	15000	PC+Alu.	E14/E27	45*80	100/0.026/4.2
LB301-5W-L3-GC2	G45	185-265	5	400	≥80	>0.5	15000	PC+Alu.	E14/E27	45*80	100/0.026/4.2
LB301-6W-L3-GC2	G45	185-265	6	470	≥80	>0.5	15000	PC+Alu.	E14/E27	45*80	100/0.026/4.2
LB301-6W-L3-GC2H	G45	185-265	7	560	≥80	>0.5	15000	PC+Alu.	E14/E27	45*80	100/0.026/4.2
LB301-7W-L3-GC1H	G45	185-265	7	670	≥80	>0.5	15000	PC+Alu.	E14/E27	45*80	100/0.026/4.2
LB301-8W-L3-G5L	G45	185-265	8	720	≥80	>0.5	15000	PC+Alu.	E14/E27	45*80	100/0.026/4.2
LB301-8W-L3-G5H	G45	185-265	8	850	≥80	>0.5	15000	PC+Alu.	E14/E27	45*80	100/0.026/4.2

Ra \geq 80

Plastic coated Alu.



Fields of Application

- Decorative--Living room, Kitchen, bedroom, etc.
- Operating temperature: -20 C ~ 40 C
- Not for emergency or exit lights

3000K 4000K 6500K



-20°+40°



220°



ECO

Item No.	Code	Voltage [V]	Wattage [W]	Lumen [lm]	Ra	PF	Life time [H]	Material	Base	Size [mm]	Packing [Pcs/m ³ /KG]
LB101-4.9W-W2-G8	A55	100-240	5	470	\geq 80	>0.5	25000	PC+Alu.	E27	55*102	100/0.074/10.6
LB101-7W-W2-G8	A55	100-240	7	700	\geq 80	>0.5	25000	PC+Alu.	E27	55*102	100/0.074/10.6
LB101-9W-W2-G8	A60	100-240	9	900	\geq 80	>0.5	25000	PC+Alu.	E27	60*108	100/0.052/7.5
LB101-11W-W2-G8	A60	100-240	11	1000	\geq 80	>0.5	25000	PC+Alu.	E27	60*112	100/0.052/7.5
LB101-15W-W2-G8	A60	100-240	15	1350	\geq 80	>0.5	25000	PC+Alu.	E27	60*125	100/0.056/7.5

Ra ≥ 80

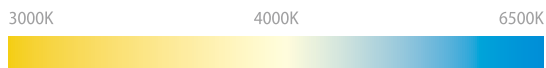
Plastic coated Alu.

IC-DRIVER



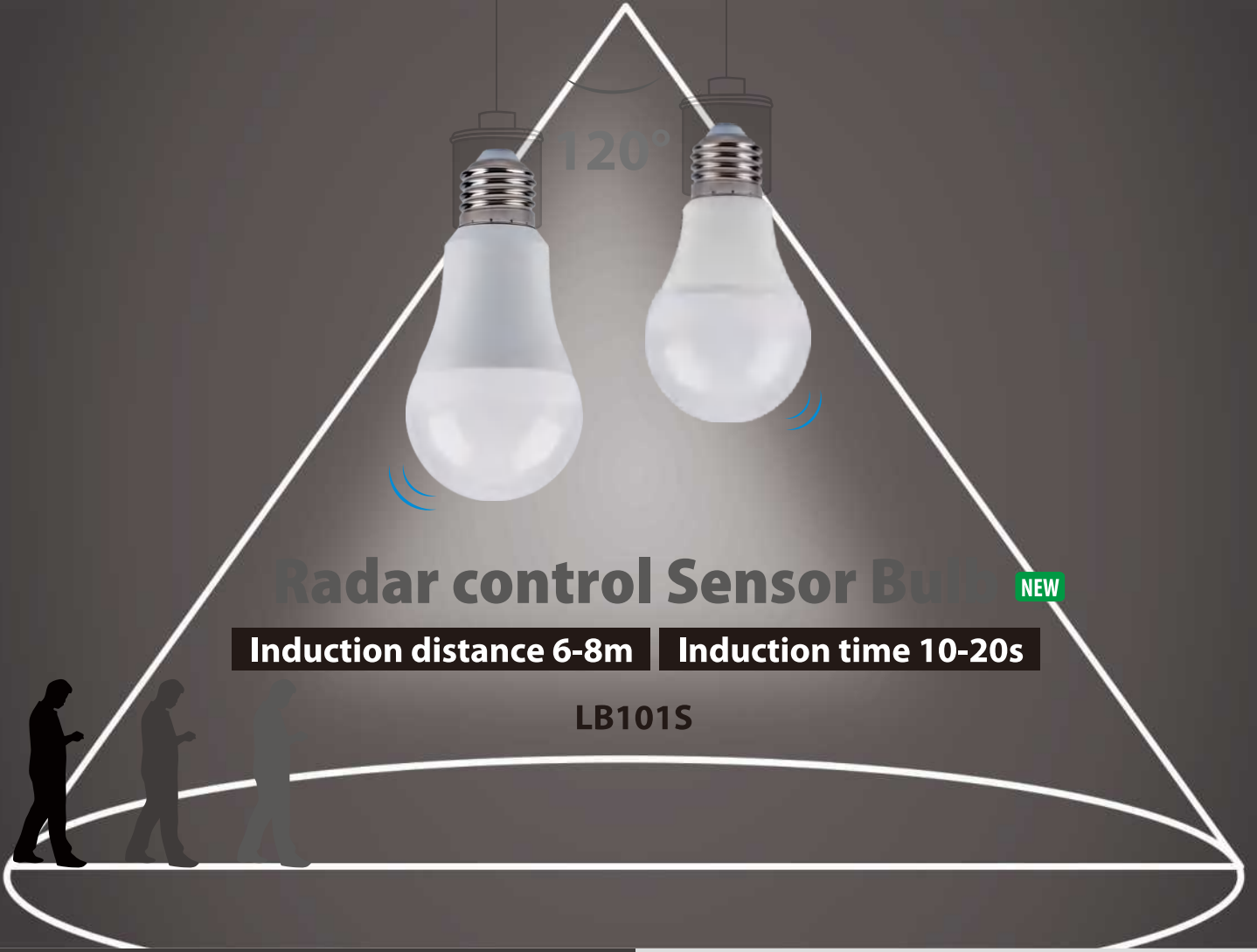
Product Features

- Material: Plastic and Alu
- Luminous angle : 270°.
- High efficiency and long lifetime
- Eco-friendly, no mercury, no radiation



-20°+40°
270°
ECO

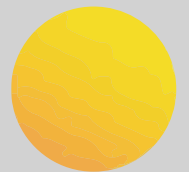
Item No.	Code	Voltage [V]	Wattage [W]	Lumen [lm]	Ra	PF	Life time [H]	Material	Base	Size [mm]	Packing [Pcs/m ³ /KG]
LB311-15W-W-G1	G95	185-265	15	1350	≥80	>0.5	15000	PC+Alu.	E27	95*142	40/0.065/6.7
LB311-20W-W-G1	G120	185-265	20	1800	≥80	>0.5	15000	PC+Alu.	E27	120*163	20/0.064/5.9



Radar control Sensor Bulb NEW

Induction distance 6-8m | **Induction time 10-20s**

LB101S



Light control Sensor Bulb

< 20lux Lighten on | **> 50lux Lighten off**



Ra ≥ 80

220°
BEAM ANGLE



-20°+40°



220°



ECO

LED Atmosphere Bulb

Item No.	Voltage [V]	Wattage [W]	Lumen [lm]	Ra	PF	Life time [H]	Size [mm]
LB101F-7W-E-G1	220-240	7	640	≥80	>0.5	20000	60*112
LB101F-9W-E-G1	220-240	9	800	≥80	>0.5	20000	60*112
LB101F-12W-E-G1	220-240	12	1050	≥80	>0.5	20000	60*121



6500K

12W/1050LM

4000K

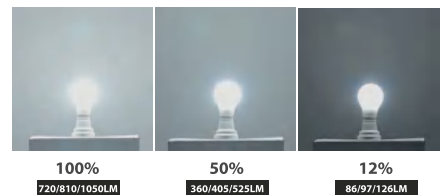
6W/500LM

2700K

1.3W/150LM

LED Three - Step Dimming Bulb

Item No.	Voltage [V]	Wattage [W]	Lumen [lm]	Ra	PF	Life time [H]	Size [mm]
LB101TDL-8W-E-G1	220-240	8	720	≥80	>0.5	20000	60*112
LB101TDL-10W-E-G1	220-240	10	810	≥80	>0.5	20000	60*112
LB101TDL-12W-E-G1	220-240	12	1050	≥80	>0.5	20000	60*121



100%

720/810/1050LM

50%

360/405/525LM

12%

86/97/126LM

LED Three - Step Coloring Temperature Bulb

Item No.	Voltage [V]	Wattage [W]	Lumen [lm]	Ra	PF	Life time [H]	Size [mm]
LB101TDC-7W-E-G1	220-240	7	640	≥80	>0.5	20000	60*112
LB101TDC-9W-E-G1	220-240	9	800	≥80	>0.5	20000	60*112
LB101TDC-12W-E-G1	220-240	12	1050	≥80	>0.5	20000	60*121



6500K

4000K

3000K

Ra ≥ 80

Plastic coated Alu.

LIC-DRIVER



LC401

Product Features

- Material: Plastic and Alu
- Beam angle: 120°
- High efficiency and long lifetime
- Eco-friendly, no mercury, no radiation

Fields of Application

- Living room, Kitchen, bedroom, etc.
- Operating temperature: -20 °C ~ 40 °C
- Not for emergency or exit lights

3000K 4000K 6000K



-20°+40°



120°



ECO

Item No.	Code	Voltage [V]	Wattage [W]	Lumen [lm]	Ra	PF	Life time [H]	Material	Base	Size [mm]	Packing [Pcs/m ³ /KG]
LC401-3W-L3-G4	R39	185-265	3	240	≥80	>0.4	15000	PC+Alu.	E14	39*68	100/0.01/5
LC401-5W-L3-G4	R50	185-265	5	400	≥80	>0.5	15000	PC+Alu.	E14	50*85	100/0.03/5
LC401-7W-L3-G4	R63	185-265	7	630	≥80	>0.5	15000	PC+Alu.	E27	63*102	50/0.03/6
LC401-9W-L3-G4	R63	185-265	9	780	≥80	>0.5	15000	PC+Alu.	E27	63*102	50/0.03/6
LC401-11W-L3-G4	R80	185-265	11	950	≥80	>0.5	15000	PC+Alu.	E27	80*112	100/0.078/9

Ra ≥ 80

Plastic coated Alu.

IC-DRIVER



LT521



Replace C37 and G45
More LED chips make it brighter than normal C37/ G45 light.

Replace A60
Smaller than traditional bulbs, fit in varied fixtures.



Item No.	Code	Voltage [V]	Wattage [W]	Lumen [lm]	Ra	PF	Life time [H]	Material	Base	Size [mm]	Packing [Pcs/m ³ /KG]
LB501-9W-E-G1	T37	185-265	9	806	≥80	>0.5	25000	E27	PC+Alu.	37*122	100/0.4/6.5
LB501-12W-E-G1	T45	185-265	12	1055	≥80	>0.5	25000	E27	PC+Alu.	45*138	100/0.4/6.5
LB501-15W-E-G1	T50	185-265	15	1350	≥80	>0.5	25000	E27	PC+Alu.	50*146	100/0.4/6.5
LB501-18W-E-G1	T50	185-265	18	1600	≥80	>0.5	25000	E27	PC+Alu.	50*146	100/0.4/6.5

LED Sunlight Lamp

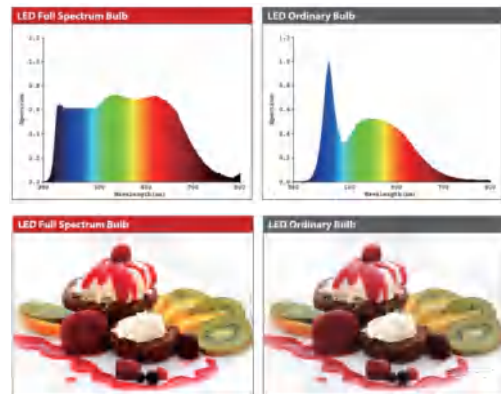
Make your room full of sunshine.



Ra \geq 95

Product Features

- Lighting is more comfortable with reference to the lighting designed by the sun light source.
- Full spectrum design, lighting is more real and natural.
- Stepless dimming, choose the best luminosity of everyone.
- Suitable for all kinds of medium and high-end lighting occasions such as museums, art exhibitions, etc.



-20°+40°
38°/100°
ECO

Item No.	Code	Voltage [V]	Wattage [W]	Lumen [lm]	Ra	PF	Life time [H]	Material	Size [mm]	Packing [Pcs/m ² /KG]
LC221FSDL-6W-E-G1	GU10	185-265	6	500	\geq 95	>0.5	25000	PC+Alu.	50*53	100/0.022/4

LED Eye-Protection Lamp

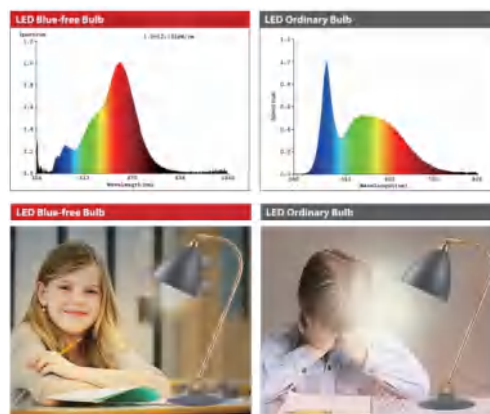
Human Centric Lighting healthy for you.



Ra \geq 95

Product Features

- Human lighting can lighten the burden of the eyes and conform to the human rhythm.
- There is no blue light design to prevent blue light from inhibiting melatonin and more sleep.
- Stepless dimming.
- It is suitable for indoor lighting occasions such as bedrooms.



-20°+40°
38°/100°
ECO

Item No.	Code	Voltage [V]	Wattage [W]	Lumen [lm]	Ra	PF	Life time [H]	Material	Size [mm]	Packing [Pcs/m ³ /KG]
LC221HDL-6W-E-G1	GU10	185-265	6	500	\geq 95	>0.5	25000	PC+Alu.	50*53	100/0.022/4

High color rendering index **Ra > 95**

The lighting makes the subject natural and fresh



Ra ≥ 95

38°/100°

BEAM ANGLE

Product Features

- Decorative—Living room, Kitchen, bedroom, etc.
- Operating temperature: -20 C ~ 40 C
- Not for emergency or exit lights
- High efficiency and long lifetime
- Eco-friendly, no mercury, no radiation High efficiency and long lifetime



-20°+40°



38°/100°



ECO

Item No.	Code	Voltage [V]	Wattage [W]	Lumen [lm]	Ra	DF	Life time [H]	Material	Size [mm]	Packing [Pcs/m³/KG]
LC201HR+8W-E-G1	GU10	185-265	6	470	≥95	>0.7	15000	PC+Alu.	50*53	100/0.052/7.5
LC221HR+8W-E-G1	GU10	185-265	6	470	≥95	>0.7	15000	PC+Alu.	50*53	100/0.052/7.5

LED Halogen Bulbs

Ra≥80

Plastic coated Alu.



LC161



LC261



Item No.	Code	Voltage [V]	Wattage [W]	Lumen [lm]	Ra	PF	Life time [H]	Material	Size [mm]	Packing [Pcs/m ³ /KG]
LC161-3W-E-G2	MR11	185-265	3	240	≥80	>0.4	15000	PC+Alu.	35*42	100/0.022/4
LC261-3W-E-G2	GU11	185-265	3	240	≥80	>0.4	15000	PC+Alu.	35*46	100/0.022/4

LED Halogen Bulbs

Ra ≥ 80

Plastic coated Alu.



LC201

LC221



Compatible Triac Dimmer List

- ☑ PEHA 434
- ☑ Merten SBD600RL
- ☑ Busch 2250U
- ☑ Berker 2875
- ☑ JUNG 225 NV DE
- ☑ Busch 2200
- ☑ SIEMENS 5TC8 283
- ☑ GIRA 0307 00/I02
- ☑ Busch 6517 U-101
- ☑ SIEMENS 5TC8 256

Product Features

- Compatibility: almost 90% dimmers on the market
- Protection for short-circuit, open circuit, overheating
- Adjusting lumen with dimmer, CCT dimmable
- Widely used in hotel household and commercial
- CE, RoHS, GS, ErP, certification



Item No.	Code	Voltage [V]	Wattage [W]	Lumen [lm]	Ra	PF	Life time [H]	Material	Size [mm]	Packing [Pcs/m ³ /KG]
LC201DL-6W-E-G1	GU10	185-265	6	450	≥80	>0.5	15000	PC+Alu.	50*53	100/0.022/6.2
LC221-6W-E-G1	GU10	185-265	6	450	≥80	>0.5	15000	PC+Alu.	50*53	100/0.022/6.2

LED Halogen Bulbs

Ra≥80

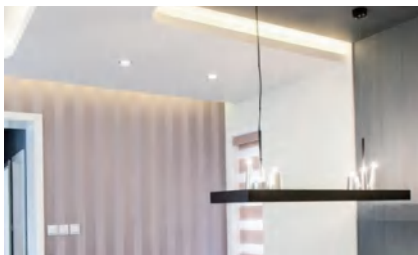
Plastic coated Alu.



LC101



LC201



Item No.	Code	Voltage [V]	Wattage [W]	Lumen [lm]	Ra	PF	Life time [H]	Material	Size [mm]	Packing [Pcs/m³/KG]
LC101-3W-L3-G5	MR16	185-265	3	240	≥80	>0.5	15000	PC+Alu.	50*48	100/0.022/4
LC101-5W-L3-G5	MR16	185-265	5	380	≥80	>0.5	15000	PC+Alu.	50*48	100/0.022/4
LC101-7W-L3-G5	MR16	185-265	7	540	≥80	>0.5	15000	PC+Alu.	50*48	100/0.022/4
LC101-8W-L3-G5	MR16	185-265	8	600	≥80	>0.5	15000	PC+Alu.	50*48	100/0.022/4
LC101-8W-L3-G5H	MR16	185-265	8	720	≥80	>0.5	15000	PC+Alu.	50*48	100/0.022/4
LC101-8W-L3-G5H2	MR16	185-265	8	810	≥80	>0.5	15000	PC+Alu.	50*48	100/0.022/4
LC101-8W-L3-G5H3	MR16	185-265	8	900	≥80	>0.5	15000	PC+Alu.	50*48	100/0.022/4
LC201-3W-L3-G5	GU10	185-265	3	240	≥80	>0.5	15000	PC+Alu.	50*56	100/0.022/4
LC201-5W-L3-G5	GU10	185-265	5	380	≥80	>0.5	15000	PC+Alu.	50*56	100/0.022/4
LC201-7W-L3-G5	GU10	185-265	7	540	≥80	>0.5	15000	PC+Alu.	50*56	100/0.022/4
LC201-8W-L3-G5	GU10	185-265	8	620	≥80	>0.5	15000	PC+Alu.	50*56	100/0.022/4
LC201-8W-L3-G5H	GU10	185-265	8	720	≥80	>0.5	15000	PC+Alu.	50*56	100/0.022/4
LC201-8W-L3-G5H2	GU10	185-265	8	810	≥80	>0.5	15000	PC+Alu.	50*56	100/0.022/4
LC201-8W-L3-G5H3	GU10	185-265	8	900	≥80	>0.5	15000	PC+Alu.	50*56	100/0.022/4

LED Halogen Bulbs

Ra≥80

Plastic coated Alu.



LC121



LC221



3000K 4000K 6500K



Item No.	Code	Voltage [V]	Wattage [W]	Lumen [lm]	Ra	PF	Life time [H]	Material	Size [mm]	Packing [Pcs/m ² /KG]
LC121-3W-L3-G5	MR16	185-265	3	240	≥80	>0.5	15000	PC+Alu.	50*48	100/0.022/4
LC121-5W-L3-G5	MR16	185-265	5	380	≥80	>0.5	15000	PC+Alu.	50*48	100/0.022/4
LC121-7W-L3-G5	MR16	185-265	7	540	≥80	>0.5	15000	PC+Alu.	50*48	100/0.022/4
LC121-8W-L3-G5	MR16	185-265	8	600	≥80	>0.5	15000	PC+Alu.	50*48	100/0.022/4
LC221-3W-L3-G5	GU10	185-265	3	240	≥80	>0.5	15000	PC+Alu.	50*56	100/0.022/4
LC221-5W-L3-G5	GU10	185-265	5	380	≥80	>0.5	15000	PC+Alu.	50*56	100/0.022/4
LC221-7W-L3-G5	GU10	185-265	7	540	≥80	>0.5	15000	PC+Alu.	50*56	100/0.022/4
LC221-8W-L3-G5	GU10	185-265	8	620	≥80	>0.5	15000	PC+Alu.	50*56	100/0.022/4

LED Halogen Bulbs

Ra≥80

Glass



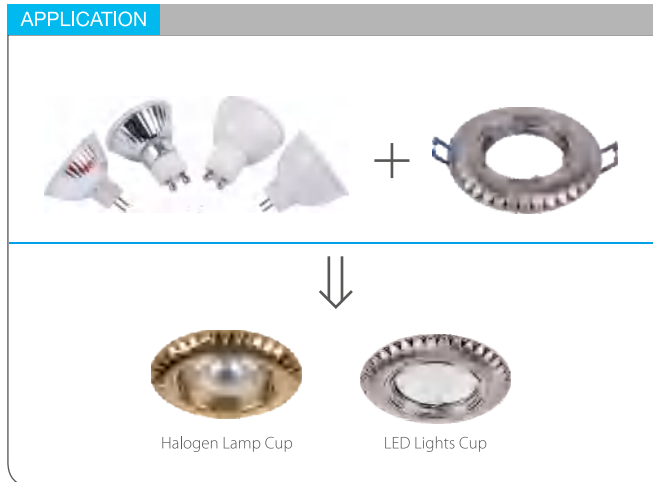
LC181



LC161



LC261



Item No.	Code	Voltage [V]	Wattage [W]	Lumen [lm]	Ra	PF	Life time [H]	Material	Size [mm]	Packing [Pcs/m ³ /KG]
LC181-3W-E-G1	MR11	12/230	3	240	≥80	>0.4	15000	Glass	35*40	100/0.022/4
LC161-5W-E-G1	MR16	12/230	5	345	≥80	>0.5	15000	Glass	50*49	100/0.022/4
LC161-6W-E-G1	MR16	12/230	6	450	≥80	>0.5	15000	Glass	50*49	100/0.022/4
LC261-5W-E-G1	GU10	12/230	5	345	≥80	>0.5	15000	Glass	50*55	100/0.022/4
LC261-6W-E-G1	GU10	12/230	6	450	≥80	>0.5	15000	Glass	50*55	100/0.022/4

LED Halogen Bulbs

Ra ≥ 80

Plastic coated Alu.



Dimmable

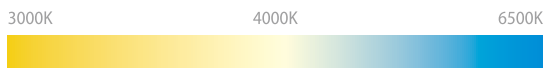


Fields of Application

- Living room, Kitchen, bedroom, etc.
- Operating temperature: -20 C ~ 40 C
- Not for emergency or exit lights

Product Features

- Material: Plastic and Alu.
- Beam angle : 38°.
- High efficiency and long lifetime
- Eco-friendly, no mercury, no radiation



 **-20°+40°**
 **38°**
 **ECO**

Item No.	Code	Voltage [V]	Wattage [W]	Lumen [lm]	Ra	PF	Life time [H]	Material	Size [mm]	Packing [Pcs/m³/KG]
LCA11-9W-E-G1	AR70	185-265	9	806	≥80	>0.5	15000	PC+Alu.	65*70	80/0.040/8
LCA11-12W-E-G1	AR111	185-265	12	1050	≥80	>0.5	15000	PC+Alu.	65*111	80/0.040/8
LCA11-15W-E-G1	AR111	185-265	15	1200	≥80	>0.5	15000	PC+Alu.	65*111	80/0.040/8

LED Halogen Bulbs

Ra≥80

Plastic coated Alu.



Dimmable



Fields of Application

- Living room, Kitchen, Showcase, etc.
- Operating temperature: -20 °C ~ 40 °C
- Not for emergency or exit lights

Product Features

- Material: Plastic and Alu
- Beam angle: 38°/ 60°
- High efficiency and long lifetime
- Eco-friendly, no mercury, no radiation



Item No.	Code	Voltage [V]	Wattage [W]	Lumen [lm]	Ra	PF	Life time [H]	Material	Base	Size [mm]	Packing [Pcs/m³/KG]
LC321DL-7W-E-G1	PAR20	120	7	470	≥80	>0.7	25000	PC+Alu.	E26	63*80	80/0.040/8
LC321DL-9W-E-G1	PAR30	120	9	560	≥80	>0.7	25000	PC+Alu.	E26	95*118	50/0.044/8
LC321DL-15W-E-G1	PAR38	120	15	1000	≥80	>0.7	25000	PC+Alu.	E26	122*132	20/0.046/8
LC321DL-18W-E-G1	PAR38	120	18	1200	≥80	>0.7	25000	PC+Alu.	E26	122*132	20/0.046/8

LED Halogen Bulbs

Ra≥80

Plastic coated Alu.



LC211-W



LC311-W



Fields of Application

- Living room, Kitchen, bedroom, etc.
- Operating temperature: -20 C ~ 40 C
- Not for emergency or exit lights

Product Features

- Material: Plastic and Alu
- Beam angle : 38°
- High efficiency and long lifetime
- Eco-friendly, no mercury, no radiation

3000K 4000K 6500K




-20°+40°


38°


ECO

Item No.	Code	Voltage [V]	Wattage [W]	Lumen [lm]	Ra	PF	Life time [H]	Material	Base	Size [mm]	Packing [Pcs/m ³ /KG]
LC211-6.5W-W-G3	GU10	85-265	6.5	400	≥80	>0.5	15000	PC+Alu.	GU10	50*53	100/0.022/4
LC211-7.5W-W-G3	GU10	85-265	7.5	540	≥80	>0.5	15000	PC+Alu.	GU10	50*53	100/0.022/4
LC311-7W-W-G3	PAR20	85-265	7	560	≥80	>0.5	15000	PC+Alu.	E27	63*84	80/0.040/8
LC311-9W-W-G3	PAR30	85-265	9	806	≥80	>0.5	15000	PC+Alu.	E27	94*118	50/0.044/8
LC311-15W-W-G3	PAR38	85-265	15	1350	≥80	>0.5	15000	PC+Alu.	E27	120*138	20/0.046/8

LED Shop Lights

Ra \geq 80

Plastic coated Alu.



Product Features & Application

- High efficiency and long lifetime
- Decorative--Factories, Outdoors, Warehouses
- Operating temperature: -20 C ~ 40 C
- Not for emergency or exit lights



Item No.	Code	Voltage [V]	Wattage [W]	Lumen [lm]	Ra	PF	Life time [H]	Material	Base	Size [mm]	Packing [Pcs/m ³ /KG]
LB121-15W-W-G3	A70	100-240	15	1350	\geq 80	>0.9	20000	PC+Alu.	E27	70*141	100/0.075/13.2
LB121-18W-W-G3	A80	100-240	18	1620	\geq 80	>0.9	20000	PC+Alu.	E27	80*165	50/0.05/6.5
LB121-24W-W-G3	A95	100-240	24	2160	\geq 80	>0.9	20000	PC+Alu.	E27	95*187	20/0.08/9.63



Item No.	Code	Voltage [V]	Wattage [W]	Lumen [lm]	Ra	PF	Life time [H]	Material	Base	Size [mm]	Packing [Pcs/m ³ /KG]
LB121-20W-W-G1	A95	100-240	20	1800	\geq 80	>0.9	20000	PC+Alu.	E27	95*187	20/0.08/9.63
LB121-30W-W-G1	A110	100-240	30	2700	\geq 80	>0.9	20000	PC+Alu.	E27	110*201	20/0.3/7
LB121-40W-W-G1	A140	100-240	40	3600	\geq 80	>0.9	20000	PC+Alu.	E27	140*250	20/0.48/9
LB121-50W-W-G1	A160	100-240	50	4500	\geq 80	>0.9	20000	PC+Alu.	E27	160*276	15/0.4/12
LB121-18W-U-G1	A80	185-265	18	1500	\geq 80	>0.5	20000	PC+Alu.	E27	80*153	50/0.06/12.8
LB121-25W-U-G1	A95	185-265	25	2100	\geq 80	>0.5	20000	PC+Alu.	E27	95*187	20/0.08/9.63
LB121-36W-U-G1	A110	185-265	36	3050	\geq 80	>0.5	20000	PC+Alu.	E27	110*201	20/0.3/7
LB121-48W-U-G1	A140	185-265	48	4050	\geq 80	>0.5	20000	PC+Alu.	E27	140*250	20/0.48/9

LED Shop Lights

Ra \geq 80

Plastic coated Alu.



Product Features & Application

- Material: Plastic
- Luminous angle: 180°.
- Nice look like a bowling
- Long and large alu-cup good for heat dissipation
- Wide luminous area
- Shop, exhibition, supermarket, household, small warehouse, small factory etc lighting area.



-20°+40°
180°
ECO

Item No.	Voltage [V]	Wattage [W]	Lumen [lm]	Ra	PF	Life time [H]	Material	Base	Size [mm]	Packing [Pcs/m ³ /KG]
LT641-20W-L2-G1	100-240	20	1700	\geq 80	$>$ 0.5	20000	PC	E27	75*180	50/0.061/11.2
LT641-30W-L2-G1	100-240	30	2400	\geq 80	$>$ 0.5	20000	PC	E27	90*208	40/0.083/11.5
LT641-40W-L2-G1	100-240	40	3200	\geq 80	$>$ 0.5	20000	PC	E27	105*238	40/0.126/12.8
LT641-50W-L2-G1	100-240	50	4000	\geq 80	$>$ 0.5	20000	PC	E27	120*278	20/0.098/12.2

Ra \geq 80

Plastic coated Alu.



Product Features & Application

- Decorative--Factories, Outdoors, Warehouses
- Operating temperature: -20 C ~ 40 C
- Not for emergency or exit lights

3000K 4000K 6500K



-20°+40°

180°

ECO



Item No.	Code	Voltage [V]	Wattage [W]	Lumen [lm]	Ra	PF	Life time [H]	Material	Base	Size [mm]	Packing [Pcs/m ³ /KG]
LT661-20W-W-G6	T80	100-240	14	1800	80(R9>0)	\geq 0.92	15000	PBT+ALU+PP	E27	70*128	100/0.08/7
LT661-30W-W-G6	T100	100-240	19	2700	80(R9>0)	\geq 0.92	15000	PBT+ALU+PP	E27	80*138	50/0.06/5
LT661-40W-W-G6	T120	100-240	28	3600	80(R9>0)	\geq 0.92	15000	PBT+ALU+PP	E27	100*168	40/0.06/6
LT661-50W-W-G6	T140	100-240	35	4500	80(R9>0)	\geq 0.92	15000	PBT+ALU+PP	E27	120*193	20/0.07/5

Other countries

Item No.	Code	Voltage [V]	Wattage [W]	Lumen [lm]	Ra	PF	Life time [H]	Material	Base	Size [mm]	Packing [Pcs/m ³ /KG]
LT661-18W-L1-G4C	T80	200-240	18	1440	\geq 80	>0.5	9000	PBT+ALU+PP	E27	80*138	50/0.06/5
LT661-25W-L1-G4C	T100	200-240	25	2000	\geq 80	>0.5	9000	PBT+ALU+PP	E27	100*168	40/0.06/6
LT661-36W-L1-G4C	T120	200-240	36	2880	\geq 80	>0.5	9000	PBT+ALU+PP	E27	120*193	20/0.07/5
LT661-48W-L1-G4C	T140	200-240	48	3840	\geq 80	>0.5	9000	PBT+ALU+PP	E27	140*224	20/0.11/5
LT661-65W-L3-G4C	T160	200-240	65	4400	\geq 80	>0.5	9000	PBT+ALU+PP	E27	160*270	12/0.1/5
LT661-15W-W2-G2	T70	100-240	15	1200	\geq 80	>0.5	25000	PC+Alu.	E27	70*128	50/0.06/12.8
LT661-20W-W2-G2	T80	100-240	20	1600	\geq 80	>0.5	25000	PC+Alu.	E27	80*140	20/0.08/9.63
LT661-30W-W2-G2	T100	100-240	30	2400	\geq 80	>0.5	25000	PC+Alu.	E27	100*170	20/0.08/9.63
LT661-40W-W2-G2	T120	100-240	40	3200	\geq 80	>0.5	25000	PC+Alu.	E27	120*190	20/0.3/7
LT661-50W-W2-G2	T140	100-240	50	4000	\geq 80	>0.5	25000	PC+Alu.	E27	140*220	50/0.06/12.8
LT661-60W-W2-G2	T160	100-240	60	4800	\geq 80	>0.5	25000	PC+Alu.	E27	160*270	20/0.08/9.63
LT661-15W-L2-G2	T70	220-240	15	1350	\geq 80	>0.5	25000	PC+Alu.	E27	70*128	50/0.06/12.8
LT661-20W-L2-G2	T80	220-240	20	1800	\geq 80	>0.5	25000	PC+Alu.	E27	80*140	20/0.08/9.63
LT661-30W-L2-G2	T100	220-240	30	2700	\geq 80	>0.5	25000	PC+Alu.	E27	100*170	20/0.08/9.63
LT661-40W-L2-G2	T120	220-240	40	3600	\geq 80	>0.5	25000	PC+Alu.	E27	120*190	20/0.3/7
LT661-50W-L2-G2	T140	220-240	50	4500	\geq 80	>0.5	25000	PC+Alu.	E27	140*220	50/0.06/12.8

Ra \geq 80



Applications

- Courtyard
- Garden
- Street

Features

- Rated Volt: 185-265VAC 50/60Hz
- IP Rating: for damp location ONLY
- PF > 0.90, Ra > 80
- Warranty: 5 years manufacture warranty,
• free replacement for non-manmade defectives



3000K 4000K 6500K



Item No.	Voltage [V]	Wattage [W]	Lumen [lm]	Ra	PF	Life time [H]	Material	Base	Size [mm]	Packing [Pcs/m ³ /KG]
LT621-36W-E-G1	185-265	36	3960	\geq 80	>0.9	25000	PC+Alu.	E27/E40	90*230	30/0.08/8.95
LT621-54W-E-G1	185-265	54	5940	\geq 80	>0.9	25000	PC+Alu.	E27/E40	94*280	30/0.08/9.63
LT621-70W-E-G1	185-265	70	7700	\geq 80	>0.9	25000	PC+Alu.	E27/E40	121*306	30/0.08/9.63
LT621-36W-E-G2	185-265	36	3600	\geq 80	>0.9	25000	PC+Alu.	E27/E40	90*230	30/0.08/8.95
LT621-54W-E-G2	185-265	54	5400	\geq 80	>0.9	25000	PC+Alu.	E27/E40	94*280	30/0.08/9.63
LT621-70W-E-G2	185-265	70	7000	\geq 80	>0.9	25000	PC+Alu.	E27/E40	121*306	30/0.08/9.63
LT621-36W-E-G3	220-240	36	3960	\geq 80	>0.9	25000	PC+Alu.	E27/E40	98*223	30/0.08/8.95
LT621-50W-E-G3	220-240	50	5500	\geq 80	>0.9	25000	PC+Alu.	E27/E40	110*255	30/0.08/9.63

LED Industrial Lights

Ra≥80



Product Feature

- Material:Alu.
- No deformation and permissible voltage over 200-240V
- High Lumen efficiency
- Module design, different module power supply independent control.

Fields of Application

- Factory,warehouse,etc.
- Operating temperature:-20℃~40℃
- Not for emergency or exit lights
- Eco-friendly,no mercury
- Suitable for use in dry and damp locations



-20°+40° **120°** **ECO**

Item No.	Code	Voltage [V]	Wattage [W]	Lumen [lm]	Ra	PF	Life time [H]	Material	Base	Size [mm]	Packing [Pcs/m ² /KG]
LT691-30W-L2-G1	T230	200-240	30	2700	≥80	>0.9	15000	ALU+PC	E27	230*140	12/0.11/8
LT691-50W-L2-G1	T250	200-240	50	4500	≥80	>0.9	15000	ALU+PC	E27	245*140	6/0.07/6

LED Industrial Lights



3000K 4000K 6500K



-20°+40°



180°



ECO

Item No.	Code	Voltage [V]	Wattage [W]	Lumen [lm]	Ra	PF	Life time [H]	Material	Base	Size [mm]	Packing [Pcs/m ³ /KG]
LT611-80W-W1-G1	T170	100-240	80	8000	≥80	>0.9	25000	ALU+PC	E40	170*230	6/0.05/5
LT611-100W-W1-G1	T190	100-240	100	10000	≥80	>0.9	25000	ALU+PC	E40	190*275	6/0.07/6.5
LT611-150W-W1-G1	T230	100-240	150	15000	≥80	>0.9	25000	ALU+PC	E40	230*280	6/0.1/8.1

LED Industrial Lights

Ra≥80



Product Features

- Material: PC+Alu.
- Luminous angle: 180°.
- High efficiency and long lifetime
- Eco-friendly, no mercury, no radiation

Fields of Application

- Factory,warehouse,etc.
- Operating temperature:-20℃~40℃
- Not for emergency or exit lights
- Eco-friendly,no mercury
- Suitable for use in dry and damp locations



Item No.	Code	Voltage [V]	Wattage [W]	Lumen [lm]	Ra	PF	Life time [H]	Material	Base	Size [mm]	Packing [Pcs/m ² /KG]
LT671-20W-L2-G2	T80	185-265	20	1600	≥70	>0.5	25000	PC+Alu.	E27	80*151	40/0.04/4.5
LT671-30W-L2-G2	T100	185-265	30	2700	≥70	>0.5	25000	PC+Alu.	E27	100*184	40/0.09/5.5
LT671-40W-L2-G2	T120	185-265	40	3000	≥70	>0.5	25000	PC+Alu.	E27	120*212	20/0.07/7.6
LT671-50W-L2-G2	T140	185-265	50	4500	≥70	>0.5	25000	PC+Alu.	E27	140*230	20/0.10/8.5
LT671-70W-L2-G2	T140	185-265	70	6300	≥70	>0.5	25000	PC+Alu.	E40	140*248	10/0.06/11
LT671-100W-L2-G2	T160	185-265	100	9000	≥70	>0.5	25000	PC+Alu.	E40	160*288	10/0.08/17.5
LT671-20W-W2-G2	T80	100-240	20	1600	≥70	>0.9	25000	PC+Alu.	E27	80*151	40/0.04/4.5
LT671-30W-W2-G2	T100	100-240	30	2700	≥70	>0.9	25000	PC+Alu.	E27	100*184	40/0.09/5.5
LT671-40W-W2-G2	T120	100-240	40	3000	≥70	>0.9	25000	PC+Alu.	E27	120*212	20/0.07/7.6
LT671-50W-W2-G2	T140	100-240	50	4500	≥70	>0.9	25000	PC+Alu.	E27	140*230	20/0.10/8.5
LT671-70W-W2-G2	T140	100-240	70	6300	≥70	>0.9	25000	PC+Alu.	E40	140*248	10/0.06/11
LT671-100W-W2-G2	T160	100-240	100	9000	≥70	>0.9	25000	PC+Alu.	E40	160*288	10/0.08/17.5
LT671-80W-L2-G3	T140	185-265	70	6300	≥80	>0.5	25000	PC+Alu.	E27	140*250	10/0.06/11
LT671-100W-L2-G3	T160	185-265	100	8000	≥80	>0.5	25000	PC+Alu.	E27	160*258	10/0.08/17.5
LT671-120W-L2-G3	T160	185-265	120	9600	≥80	>0.5	25000	PC+Alu.	E40	160*258	10/0.08/17.5
LT671-160W-L2-G3	T160	185-265	160	12800	≥80	>0.5	25000	PC+Alu.	E40	160*285	10/0.12/19.5
LT671-200W-L2-G3	T180	185-265	200	16000	≥80	>0.5	25000	PC+Alu.	E40	180*250	10/0.22/20.2

LED Industrial Lights 2.5-4KV

Ra≥80

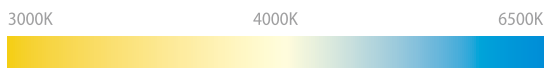
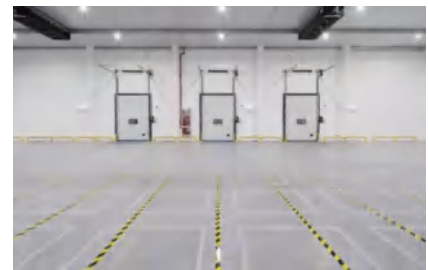


Product Features

- Material: PC+Alu.
- Luminous angle: 180°.
- High efficiency and long lifetime
- Eco-friendly, no mercury, no radiation

Fields of Application

- Factory,warehouse,etc.
- Operating temperature:-20℃~40℃
- Not for emergency or exit lights
- Eco-friendly,no mercury
- Suitable for use in dry and damp locations




-20°+40°


180°


ECO

Item No.	Code	Voltage [V]	Wattage [W]	Lumen [lm]	Ra	PF	Life time [H]	Material	Base	Size [mm]	Packing [Pcs/m ³ /KG]
LT671-80W-Y-G1	T140	220-240	80	8000	≥80	>0.9	25000	PC+Alu.	E27/E40	140*265	30/0.08/8.95
LT671-100W-Y-G1	T160	220-240	100	10000	≥80	>0.9	25000	PC+Alu.	E27/E40	160*285	30/0.08/9.63
LT671-150W-Y-G1	T160	220-240	150	15000	≥80	>0.9	25000	PC+Alu.	E40	160*310	30/0.08/9.63
LT671-200W-Y-G1	T180	220-240	180	18000	≥80	>0.9	25000	PC+Alu.	E40	180*320	10/0.08/9.63



www.yusinglighting.com



Ningbo Yusing Lighting Co, Ltd

 **ADD:**No.1199Mingguang Road,jiangshan Town,Yingzhou,Ningbo China

 **TEL:**0574-83028373

 **E-mail:**sales79@yusinglighting.com